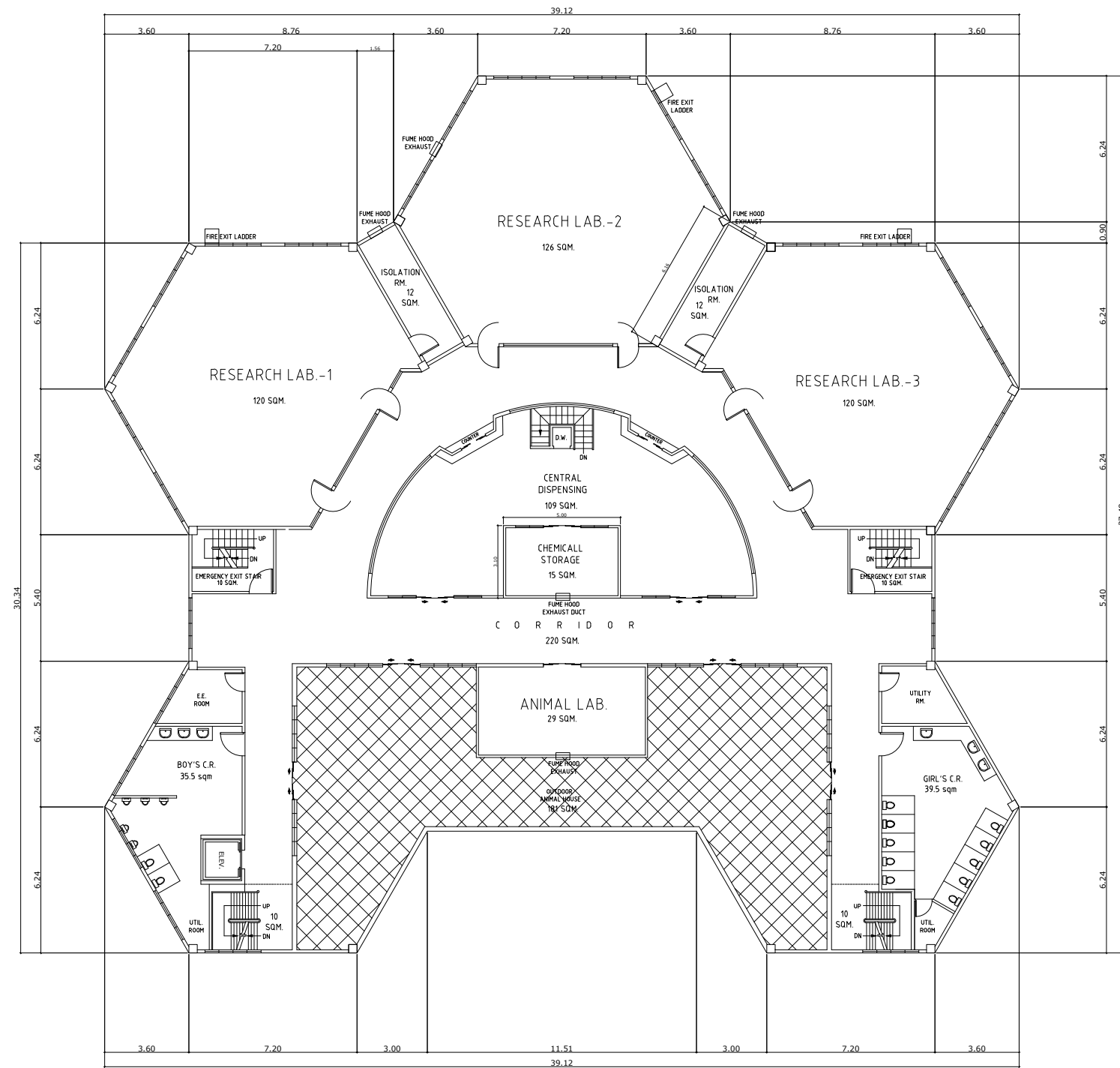



**NOTE:**

FINAL LAYOUT OF ROOMS INCLUDING FURNITURE'S , FIXTURE'S AND MECHANICAL PROVISIONS WILL BE FINALIZED DURING DESIGN STAGE.



**3RD FLOOR PLAN**

SCALE 1:300M

|   |  |  |   |  |   |
|---|--|--|---|--|---|
| <p><b>PREPARED BY:</b></p>  <p>REPUBLIC OF THE PHILIPPINES<br/>DEPARTMENT OF SCIENCE AND TECHNOLOGY<br/>PHILIPPINE SCIENCE HIGH SCHOOL<br/>MIMAROPA REGION CAMPUS<br/>BRGY. RIZAL, ODIONGAN, ROMBLON</p> | <p><b>PROJECT TITLE:</b></p> <p>CONSTRUCTION OF LABORATORY BUILDING</p> <p><b>LOCATION:</b> BRGY. RIZAL, ODIONGAN, ROMBLON</p> | <p><b>PREPARED BY:</b></p> <p>JOLITO G. TAN<br/>RESIDENT ARCHITECT</p> | <p><b>APPROVED BY:</b></p> <p>EDWARD C. ALBARACIN<br/>CAMPUS DIRECTOR</p> | <p><b>SHEET CONTENTS</b></p> <p>AS SHOWN</p> | <p><b>SHEET NO.</b></p> <p>A</p> <p>4 6</p> |
|---|--|--|---|--|---|